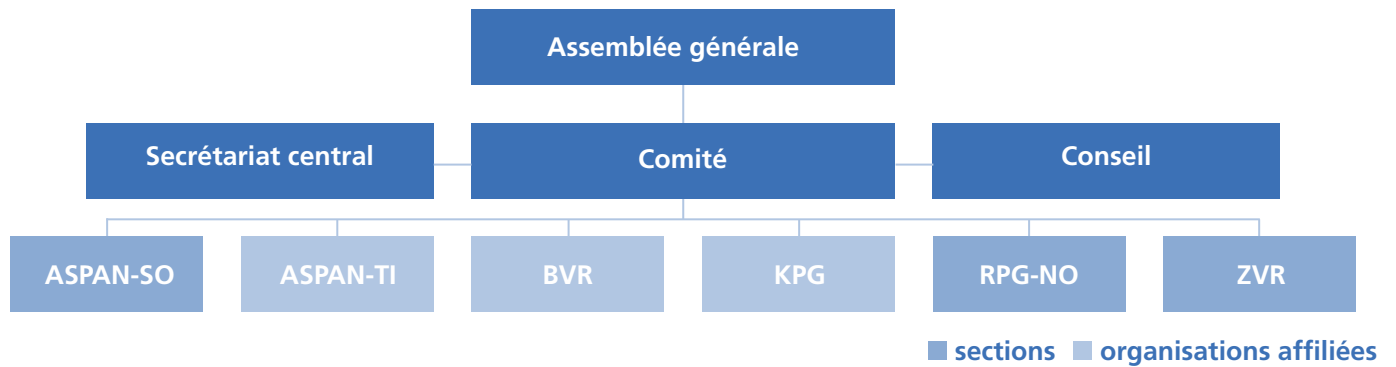
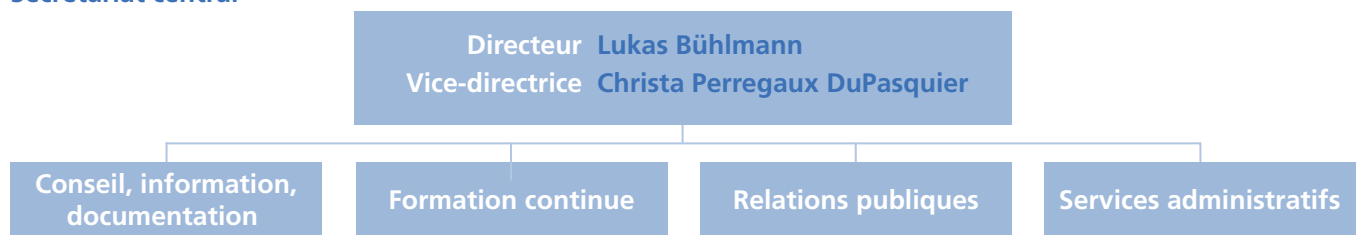


# ORGANIGRAMME



## Secrétariat central



### Conseil, information, documentation

**Lukas Bühlmann**, licencié en droit, 100%  
**Christa Perregaux DuPasquier**, avocate, 70%  
**Heidi Haag, géographe**, MAS Raumplanung ETH, 80%  
**Samuel Kissling**, MLaw, 90%  
**Niklaus Spori**, avocat, 80%  
**Sonia Blind**, juriste, 50%  
**Madeleine Ramseyer**, photographe, 50%

### Formation continue

**Heidi Haag**, responsable  
**Christa Perregaux DuPasquier**, planification / coordination Suisse romande  
**Edith Egger**, secretariat Suisse alémanique  
**Anne Huber**, secretariat Suisse romande

### Relations publiques

**Lukas Bühlmann**, responsable  
 Contacts Suisse romande: **Christa Perregaux DuPasquier**  
 Contacts Tessin: **Sonia Blind**

### Services administratifs

**Christa Perregaux DuPasquier**, responsable  
**Edith Egger**, employée de commerce, 90%  
**Daniela Pérez Lutz**, employée de commerce, 70%  
**Marco Hunziker**, collaborateur informatique, 60%  
**AnneHuber**, traductrice, 50%